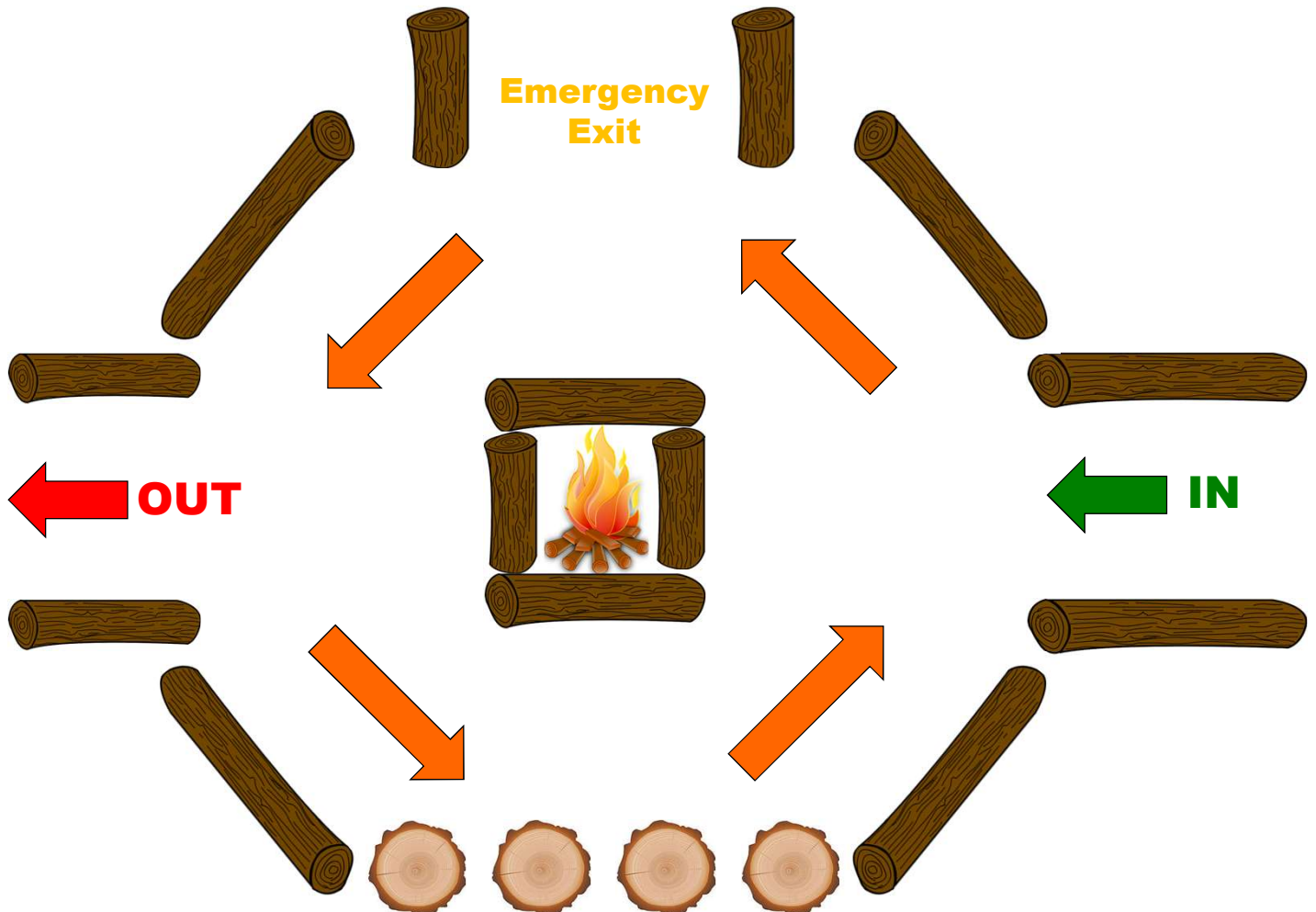


Learning in the Leaves

A safe fire circle – Version B



When we work around a fire it is important that we consider everybody's safety. We have to ensure that we move around and use the fire sensibly so that no one is put at risk. Today we have a number of rules as we use our fire circle.



Key Rules

- Only enter the circle through the 'IN' entrance.
- Move round the circle in an ant-clockwise direction.
- Take a seat on a log or stump around the edge.
- Only approach the fire with the permission of the leader.
- Only exit the fire circle through the OUT exit.
- Walk to the Emergency Exit if there is an Emergency and it's your closest safe exit.