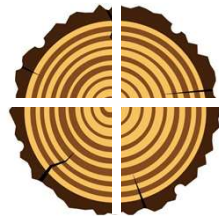


# Learning in the Leaves

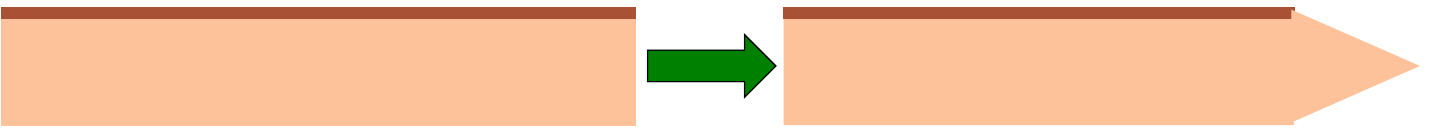
## Making a Woodland Peg



**Stage 1:** Source a log around 8 inches long and 3-4 inches thick. These may require you to cut some longer pieces to length using a bow saw. Once you have your log, split in in four using a Billhook. This will leave you with the wood to make four potential pegs.



**Stage 2:** Care fully sharpen one end of your peg to a point. For your safety remember to use the knife blade facing away from you. Depending on the piece of wood you have chosen this may take some time (hard wood and thicker pieces of wood tend to take longer).



**Stage 3:** With your knife carefully cut a notch near the opposite end. This will help keep the rope still on the peg. It is best to go for the corner which doesn't have any bark on it. Then remove the corner of the top surface above the notch, this will prevent it sheering off when struck with a mallet.



**Stage 4:** Use your peg to secure ropes, perhaps on your shelter. When hammering into the ground, avoiding hitting directly above the notch as this may break the peg.