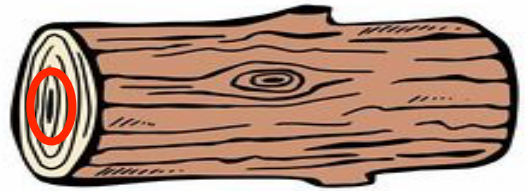
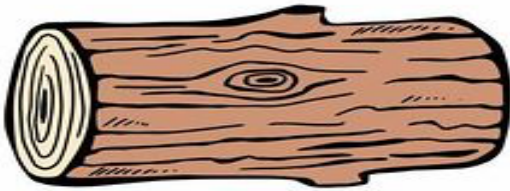


# Learning in the Leaves

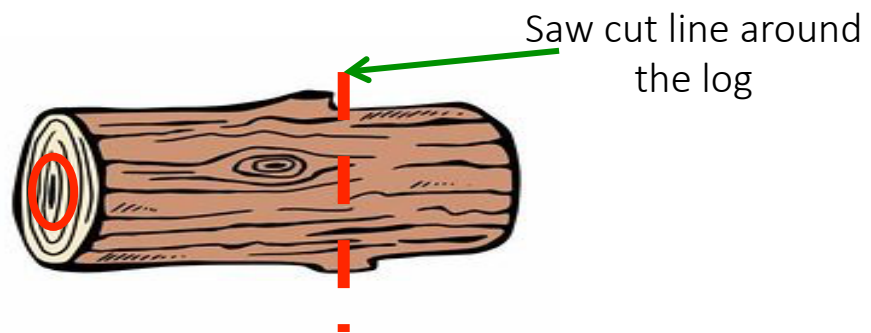
## Mallet Making – Page 1



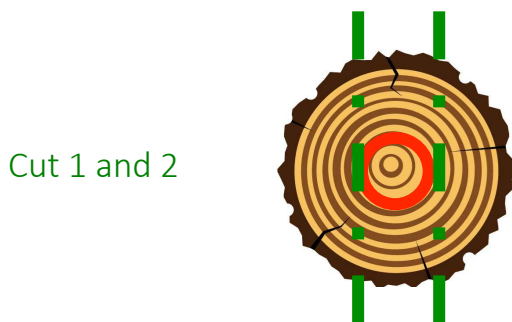
**Stage 1:** Source a log around 8 inches long and 5-6 inches thick. These may require you to cut some longer pieces to length using a bow saw. Once you have your log, mark on one end how thick you would like the handle.



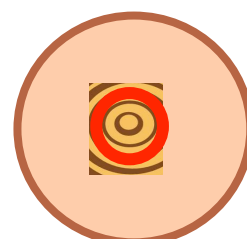
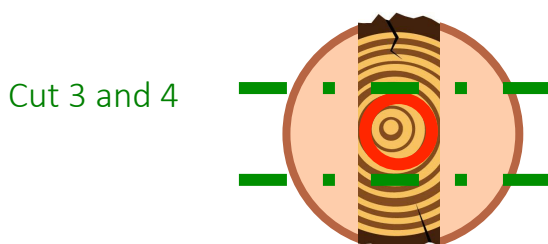
**Stage 2:** Consider how large you would like the head to be, and then use the bow saw to cut at this point. DO NOT GO ANY DEEPER THAN YOUR MARKED HANDLE. Then turn the log and do the same, continue until your cut goes around the circumference of the log.



**Stage 3:** Now Turn your log so the hand end you marked faces up. You now need to use a billhook, ensure you have familiarized yourself with the safety rules. You will need to do four cuts with the billhook to form the handle. The bow saw cut will ensure the head of the mallet doesn't come off.



After the first two cuts the mallet should look like this.



Your mallet will now have a square handle.

# Learning in the Leaves

## Mallet Making

---



**Stage 4:** Now use your sheath knife to whittle the handle into a round shape, start by removing the corners of the handle. Remember to use your knife to the side and the blade facing away from you. Your mallet will now be complete and ready for you to start hammering.

